

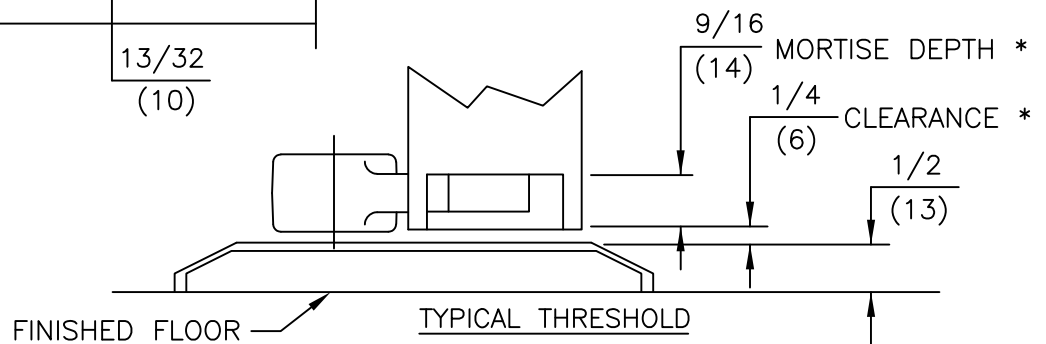
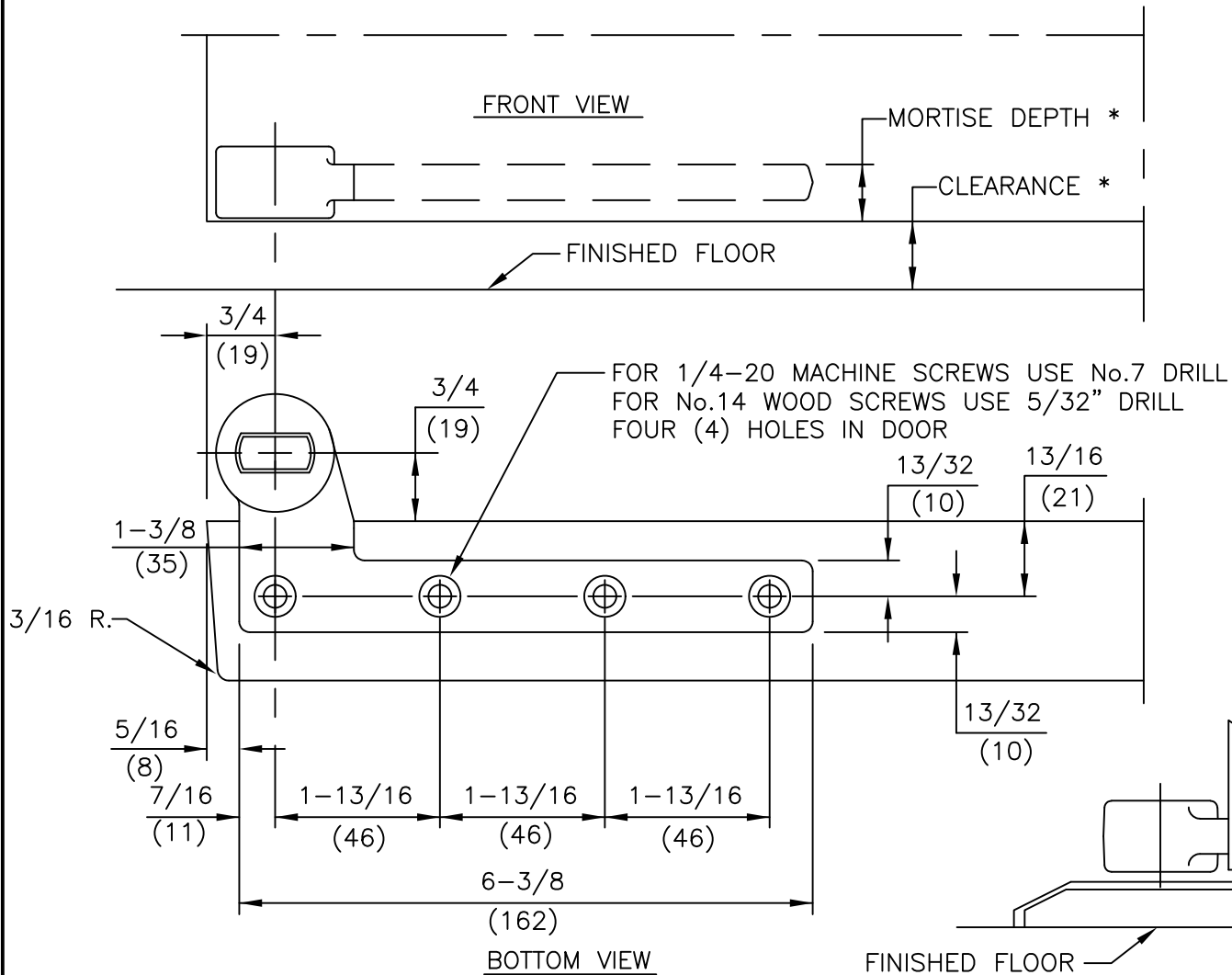
ITEM No. [75120, 75122, 75133 (DOOR FLUSH WITH FRAME) NON-HANDED]
 [75120 5/8, 75122 5/8, 75133 5/8 (DOOR INSET 1/8" FROM FRAME) HANDED]
 3/4" OFFSET FULL MORTISE TOP PIVOT

NOTES ①

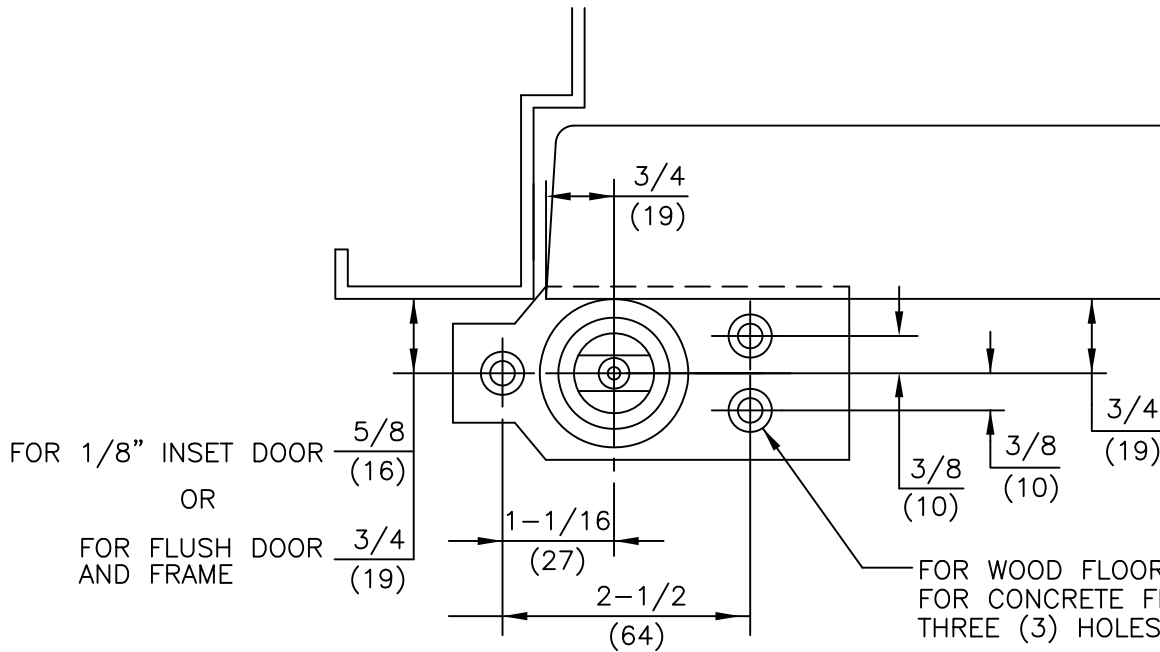
1. DO NOT SCALE DRAWING.
2. DIMENSIONS ARE IN INCHES/(MM).
3. RIGHT HAND DOOR SHOWN.
4. BEVEL HEEL EDGE OF DOOR 1/8" IN 2".
5. ALL NECESSARY REINFORCEMENT FOR ARM BY OTHERS.

SPINDLE EXT.	CLEARANCE *	MORTISE DEPTH *
STD.	5/16"	1"
STD.	1/2"	13/16"
STD.	3/4"	9/16"
5mm	15/16"	9/16"
10mm	1-1/8"	9/16"
15mm	1-5/16"	9/16"
20mm	1-1/2"	9/16"
25mm	1-11/16"	9/16"
30mm	1-15/16"	9/16"
35mm	2-1/8"	9/16"
40mm	2-5/16"	9/16"
45mm	2-1/2"	9/16"
50mm	2-11/16"	9/16"

①

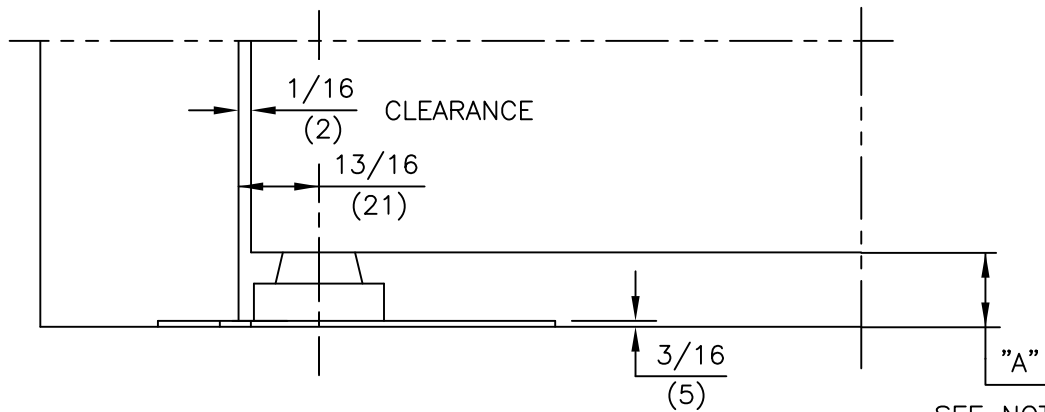


ITEM No. 75323
 3/4" OFFSET STANDARD BOTTOM ARM
 FOR NON-FIRE OR 3 HR. RATED DOORS
 FOR USE WITH 7471K FLOOR BEARING



NOTES:

1. DO NOT SCALE DRAWING.
2. DIMENSIONS ARE IN INCHES \MM.
3. RIGHT HAND DOOR SHOWN.
4. FLUSH DOOR AND FRAME PREPARATION SHOWN.
5. DIMENSION "A" IS DISTANCE FROM BOTTOM OF PIVOT TO BOTTOM OF ARM. WHEN BOTTOM ARM IS INSTALLED TO THE STANDARD TEMPLATE, THIS IS ALSO EQUAL TO THE BOTTOM DOOR CLEARANCE.

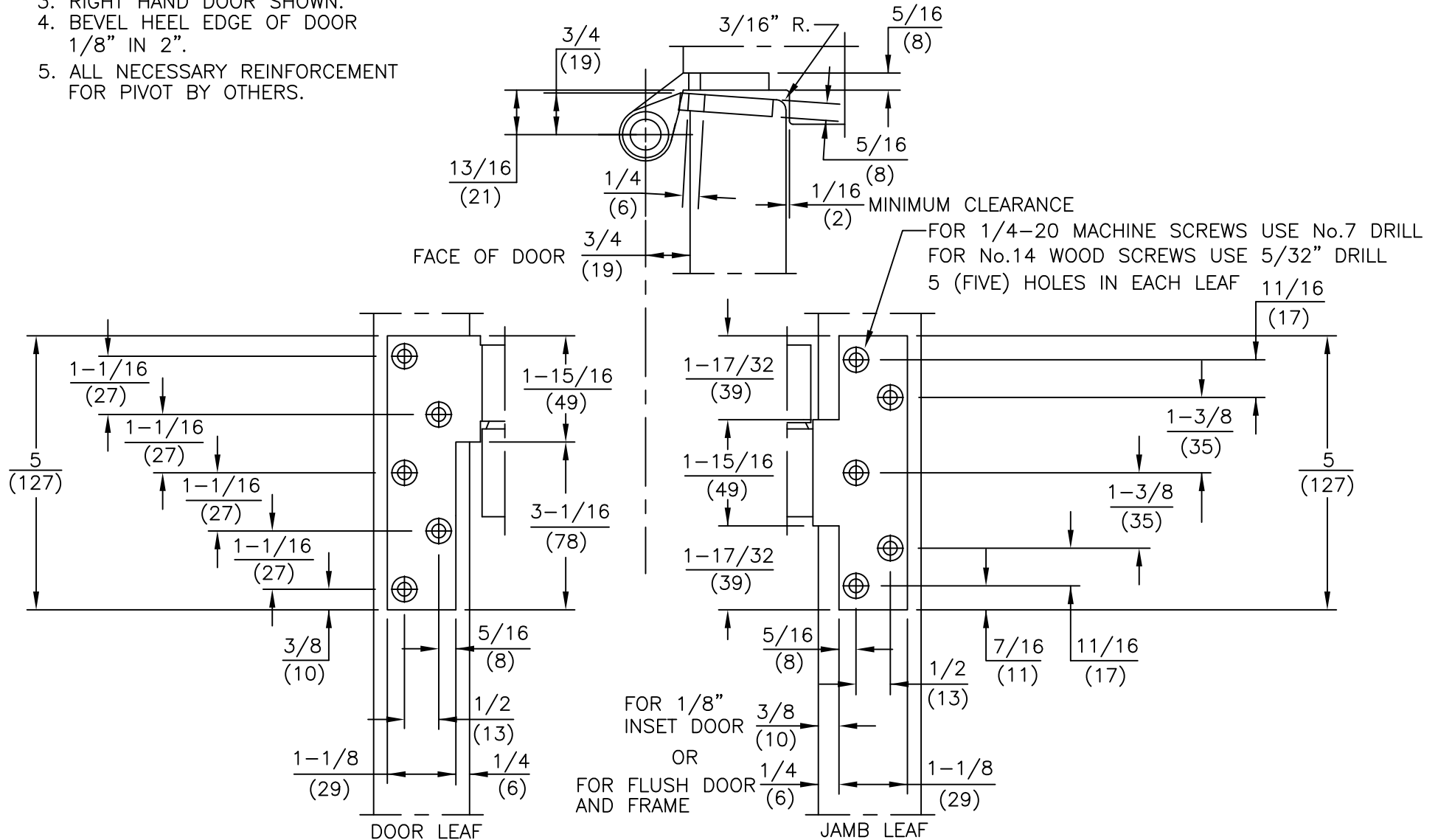


SEE NOTE 5

SPINDLE SIZE	DIM. "A"
STANDARD	$1\frac{1}{16}$ (17)
5MM EXT.	$\frac{7}{8}$ (22)
10MM EXT.	$1-\frac{1}{16}$ (27)
15MM EXT.	$1-\frac{1}{4}$ (32)
20MM EXT.	$1-\frac{7}{16}$ (37)
25MM EXT.	$1-\frac{5}{8}$ (42)
30MM EXT.	$1-\frac{7}{8}$ (47)
35MM EXT.	$2-\frac{1}{16}$ (52)
40MM EXT.	$2-\frac{1}{4}$ (57)
45MM EXT.	$2-\frac{7}{16}$ (62)

NOTES

1. DO NOT SCALE DRAWING.
2. DIMENSIONS ARE IN INCHES/(MM).
3. RIGHT HAND DOOR SHOWN.
4. BEVEL HEEL EDGE OF DOOR
 $1/8"$ IN $2"$.
5. ALL NECESSARY REINFORCEMENT
 FOR PIVOT BY OTHERS.



ITEM No. 75220, 75222, 75233
 $3/4"$ OFFSET FULL MORTISE
 INTERMEDIATE PIVOT (HANDED)



dormakaba USA, INC.
 800 523 8483